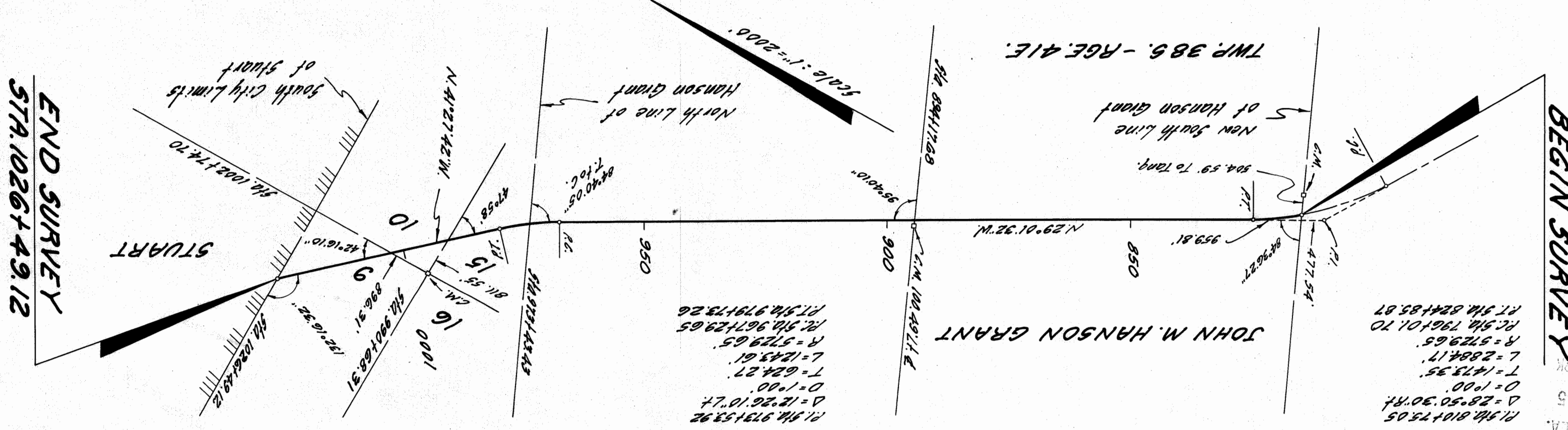


FILED & RECORDED
 IN RECORDS OFFICE, FLA.
 1959 OCT 27 PM 2:35
 COUNTY REC'D. CLERK
J. L. Moore



P1. 514.810+75.05
 Δ = 28°50'30"R
 D = 1°00'
 T = 1473.35
 L = 2884.17
 R = 5729.65
 PC. 514.796+01.70
 PT. 514.824+85.87

P1. 514.973+53.92
 Δ = 12°26'10"L
 D = 1°00'
 T = 624.27
 L = 1243.61
 R = 5729.65
 PC. 514.967+29.65
 PT. 514.979+73.26

END SURVEY
 STA. 1026+49.12

We Ralph Davis, as Director of the State Road Department of the State of Florida, and L. A. Fraleigh, as Secretary of the State Road Department of the State of Florida, do hereby certify that this map is the Official Map of Location and Survey of a portion of Section 89010, designated as a part of State Road 5 in Martin County, Florida: said portion of section 89010 extending from the New South Line of Hanson grant Northwest to the South City Limits of Stuart.
 Prepared and adopted by the State Road Department of the State of Florida under provisions of Section 335.02, Florida Statutes of 1955.

Robert Davis
 Director, State Road Department
 Approved: *L. A. Fraleigh*
 Engineer of Rights of Way
 Date: July 16, 1959
 Section 89010
 Rd. 5
 Martin Co.
 Martin County, Florida
 Clerk of the Circuit Court
 Dorothy Boy Jones